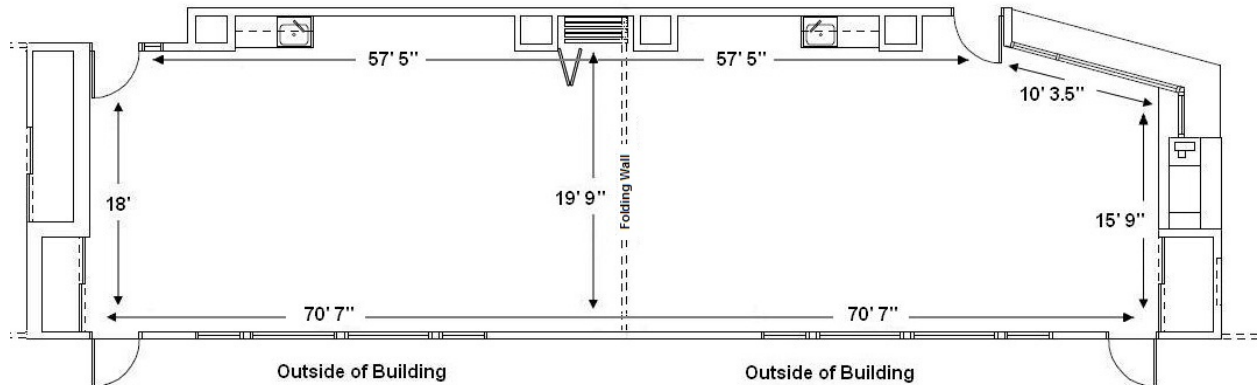


## ACTIVITY ROOM 1 & 2



### **MAX Capacity:**

- Non Fixed Seats – 120
- Non Fixed Tables and Chairs - 80

### **Recommended Capacity for Lectures:**

50-60 persons seated at tables

### **Room Uses:**

- Lectures
- Meetings
- Medium sized Events/Weddings
- Classes/Workshops
- Presentations

### **Amenities Available:**

- Whiteboard Wall
- Tables (8' and 6' Banquet)
- Black cushioned Chrome chairs
- Flip Charts
- Projector/Screen
- Local Lighting
- Sinks
- Cupboard Space
- Door to Outside
- WIFI and telephones
- Conference phone