

WELCOMES YOU

We are delighted that you have come to this open house where we are showcasing preliminary analysis and design considerations for two important projects:

**PENINSULA ROAD
STREETSCAPE**

**VILLAGE
GREEN**

At this stage, we would like your input on possible design directions. Please post sticky notes on the boards or submit comments online.

Once we have compiled the input, we will proceed with design options and those will be presented at a future open house.

The information presented at this open house is available online at www.ucluelet.ca

Staff from the District of Ucluelet and Urban Systems are here to answer questions and discuss your ideas.

CURRENT CONDITIONS

PROJECT OVERVIEW

The District of Ucluelet is undertaking the Peninsula Road Streetscape Design initiative to establish a preferred design option for Peninsula Road that improves safety, enhances mobility, and beautifies the corridor as the key gateway to Ucluelet. The District's Strategic Plan, Official Community Plan (OCP), and other documents and strategies support the need to improve Peninsula Road.

Some of the key priorities for the streetscape design are as follows:

- Address existing sidewalk gaps and expand sidewalk coverage, while ensuring universal design principles are reflected in all street design
- Develop facilities that provide for safe, comfortable cycling
- Improve design and identify new opportunities for on-street parking
- Enhance road safety, including addressing problematic locations such as the Main Street and Bay Street intersections;
- Identify opportunities to introduce landscape and street trees
- Enhance the public realm through improvements such as a coordinated street furnishing program and identifying gateway opportunities

PROJECT OUTCOME

The key outcome from the project will be a concept design for Peninsula Road. The concept design will be used to establish construction cost estimates, and detailed engineering design and construction.

Main Street has long been a challenging intersection due to steep grades and the approach angle of Main Street



Areas with parking on the road shoulder create an unsafe condition for pedestrians where sidewalks are not present



A newer crosswalk near Main Street provides a safe crossing location with proper curb ramps that are accessible for all pedestrians including individuals using a mobility aid



Certain sidewalk sections abruptly end presenting a significant issue for pedestrians, particularly those with mobility challenges



The existing pathway is directly adjacent the roadway and intersects with numerous driveways at the north end of town, creating an uncomfortable and unsafe walking / cycling experience



Locations where parked cars back directly onto the street create conflict with vehicles, cyclists and pedestrians traveling along Peninsula Road

WHAT IS UNIVERSAL DESIGN?

Universal design refers to the design of streets and infrastructure that are usable by all people, to the greatest extent possible, without the need for adaptation or specialized design. The goal of universal design is quite simply inclusion for all.



DISTRICT OF UCLUELET

LONG TERM VISION

WHAT DOES THE OFFICIAL COMMUNITY PLAN (OCP) SUGGEST FOR PENINSULA ROAD?

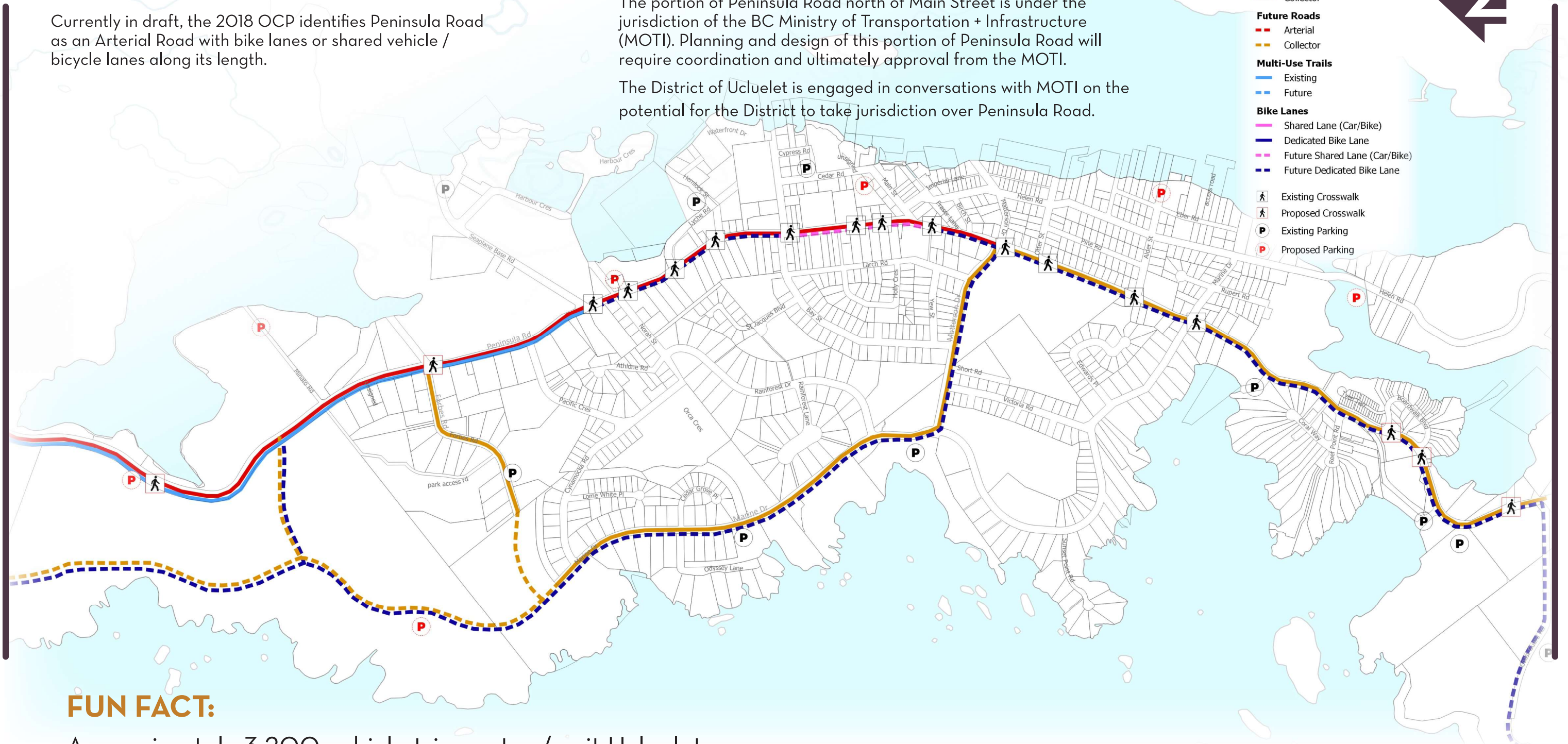
Currently in draft, the 2018 OCP identifies Peninsula Road as an Arterial Road with bike lanes or shared vehicle / bicycle lanes along its length.

JURISDICTION

The portion of Peninsula Road north of Main Street is under the jurisdiction of the BC Ministry of Transportation + Infrastructure (MOTI). Planning and design of this portion of Peninsula Road will require coordination and ultimately approval from the MOTI.

The District of Ucluelet is engaged in conversations with MOTI on the potential for the District to take jurisdiction over Peninsula Road.

- Existing Roads**
 - Arterial
 - Collector
- Future Roads**
 - - Arterial
 - - Collector
- Multi-Use Trails**
 - Existing
 - - Future
- Bike Lanes**
 - Shared Lane (Car/Bike)
 - Dedicated Bike Lane
 - - Future Shared Lane (Car/Bike)
 - - Future Dedicated Bike Lane
- Existing Crosswalk
- Proposed Crosswalk
- Existing Parking
- Proposed Parking



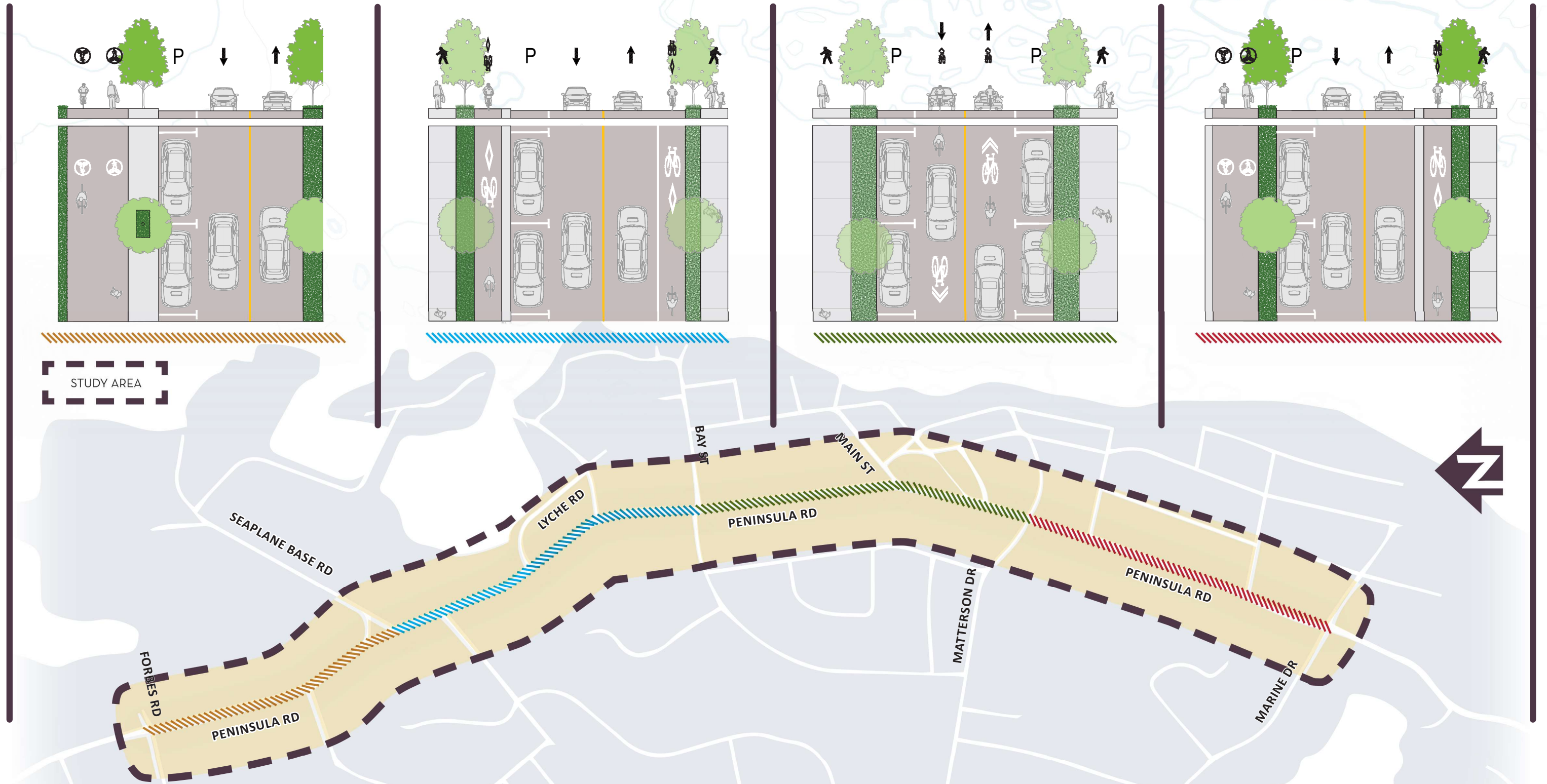
FUN FACT:

Approximately 3,200 vehicle trips enter / exit Ucluelet via Peninsula Road each day. This figure increases by approximately 50% during Summer months.



DISTRICT OF **UCLUELET**

GENERAL DESIGN DIRECTION



STUDY AREA

FUN FACT:
Total Length of Study Area = 2.2km



DISTRICT OF **UCLUELET**

PRECEDENT COMMUNITIES

Trees, landscape and street furnishings separating the sidewalk from the roadway (Tofino, BC)



Curb extensions at block ends to slow vehicle turning speeds and provide opportunities for trees and landscape (Brentwood Bay, BC)



Multi-use pathway separated from the roadway with a landscaped boulevard and on-street parking (Kelowna, BC)



PLACE A STAR
OR STICKY NOTE
ON IMAGES YOU
LIKE!



Bike lane adjacent on-street parking (Tofino, BC)



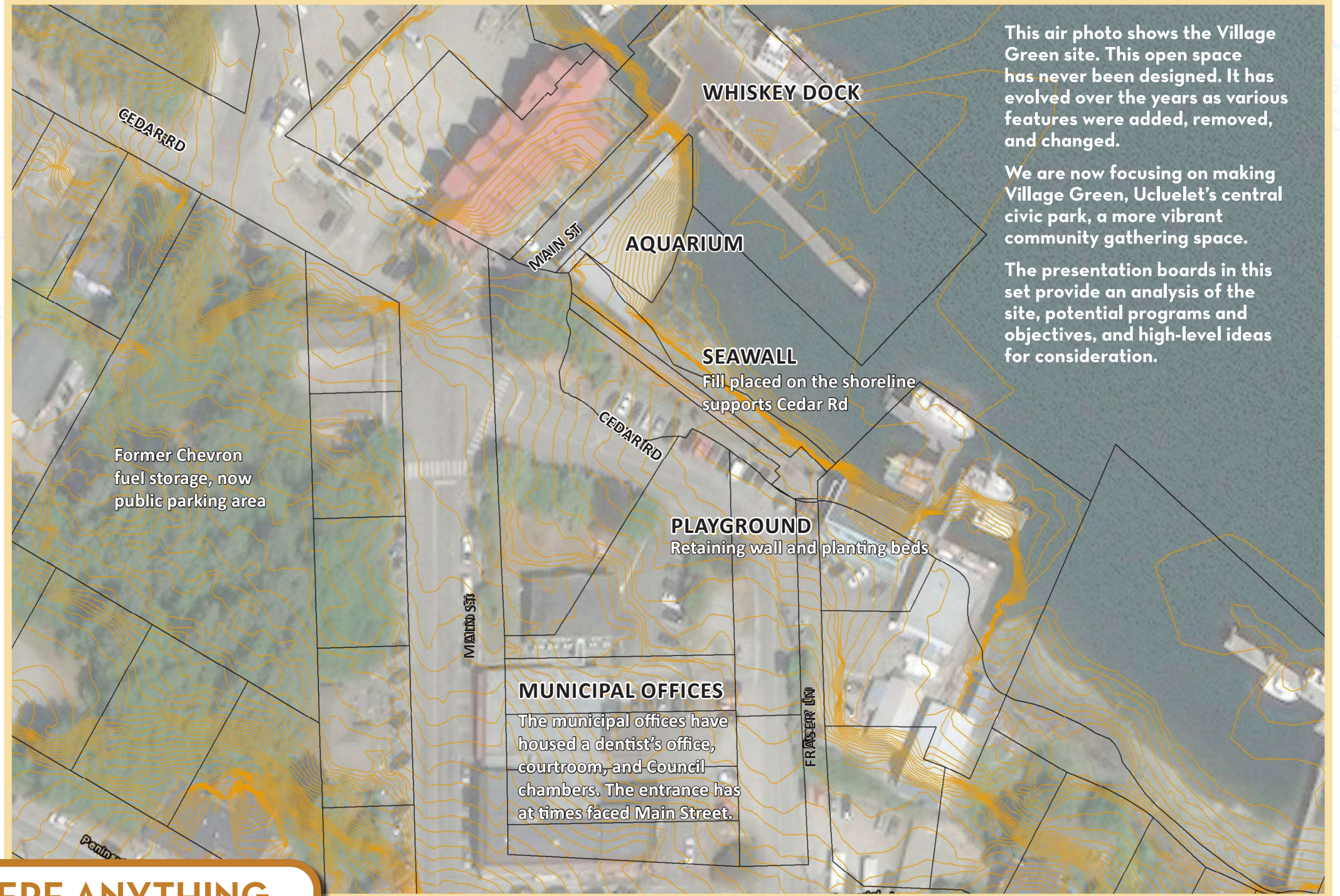
Wide sidewalks and street trees creating a pleasant walking experience



Locally themed street lights and banners (Courtenay, BC)



VILLAGE GREEN TODAY



This air photo shows the Village Green site. This open space has never been designed. It has evolved over the years as various features were added, removed, and changed.

We are now focusing on making Village Green, Ucluelet's central civic park, a more vibrant community gathering space.

The presentation boards in this set provide an analysis of the site, potential programs and objectives, and high-level ideas for consideration.

Add a Sticky Note!

IS THERE ANYTHING ELSE IMPORTANT WE SHOULD KNOW?



DISTRICT OF **UCLUELET**

VILLAGE GREEN TODAY

STRUCTURE OF VILLAGE GREEN



- Buildings and trees define the edges
- Slope towards the water draws attention to the harbour

VEHICLE CIRCULATION AND PARKING



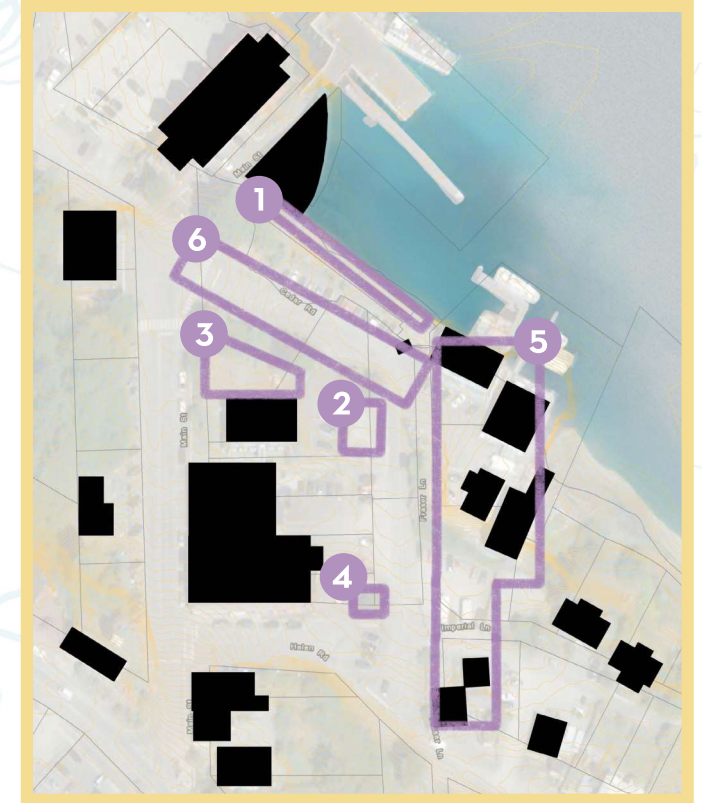
- Vehicles dominate Village Green and disconnect people from the water

FRAGMENTS OF GREEN



- The places people occupy are disjointed and all are exposed to the sights, sounds, smells, and risks of vehicles

OTHER CHALLENGES



- 1 The Promenade is close to the water with great views, but it is cut off from the rest of Village Green and many visitors never find it
- 2 The Playground is popular and has great views, but it is hemmed in with chainlink and surrounded by roads and parking
- 3 The Main Green supports public use but it is cut off from the water by a road and two rows of parking, and the maples block views to the water
- 4 The Corner Pocket is well used but is surrounded by roads and parking
- 5 The businesses, cafes, and playground along Fraser Lane are close to each other and to the waterfront, but there is no safe pedestrian route connecting them
- 6 The loaded commercial trucks leaving the fish plant use Fraser Lane to access Peninsula Road presenting significant safety concerns and cutting through the Village Green area

TAKE NOTE!

Visitors arriving in town usually trace the landscape from Peninsula Road to Main Street or Fraser Lane where they first see the harbour and the mountains rising above the opposite shore.

TAKE NOTE!

The places people occupy are disjointed and all are exposed to the sights, sounds, smells, and risks of vehicles.



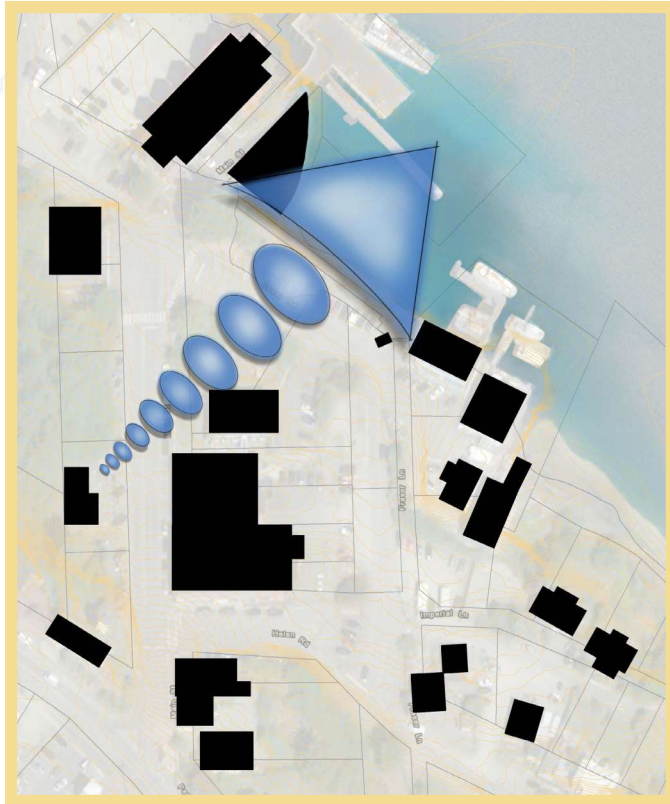
**IS THERE ANYTHING
TO ADD TO THE
ANALYSIS?**



DISTRICT OF **UCLUELET**

THE VISION

CONNECT THE TOWN TO THE OCEAN THROUGH VILLAGE GREEN



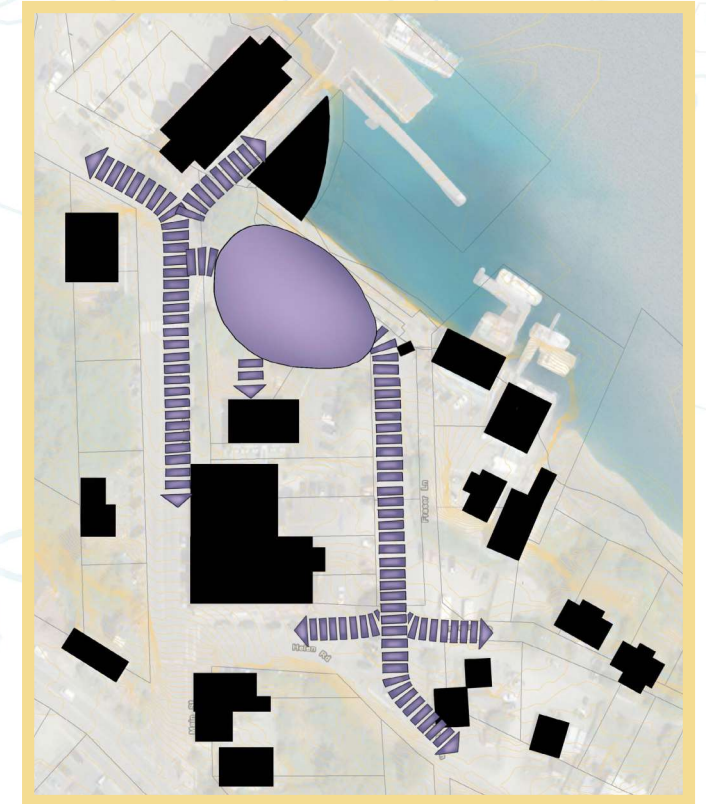
ESTABLISH VILLAGE GREEN AS A PLACE WHERE PEOPLE CAN ENJOY QUIET TIMES AND VIBRANT FESTIVALS



IMPROVE ACCESSIBILITY AND FUNCTIONALITY



TIE VILLAGE GREEN TO SURROUNDING DESTINATIONS WHILE MAKING IT SAFE AND PEDESTRIAN-FRIENDLY



TAKE NOTE!

Village Green is ideally located on the edge between the land and the sea, offering views of the fishing boats at the Whiskey Dock, the inlet, island, far shore, and the forested mountains beyond. The sights, sounds and smells of the working harbour enliven the space.

TAKE NOTE!

Village Green has opportunities to welcome more visitors to all spaces and to host bigger and better festivals and events.



DO YOU HAVE ANY COMMENT ON THE VISION? PLACE A STAR ON THE IDEAS YOU LIKE.



DISTRICT OF **UCLUELET**

PROGRAM AND PRECEDENTS

Previous engagement activities with the public identified potential activities and facilities for Village Green. The following are some of the highlights. The images show design examples. We heard strong interest in features that are uniquely Ukee, including the “grit”.

FARMER'S MARKET (bigger and better space)



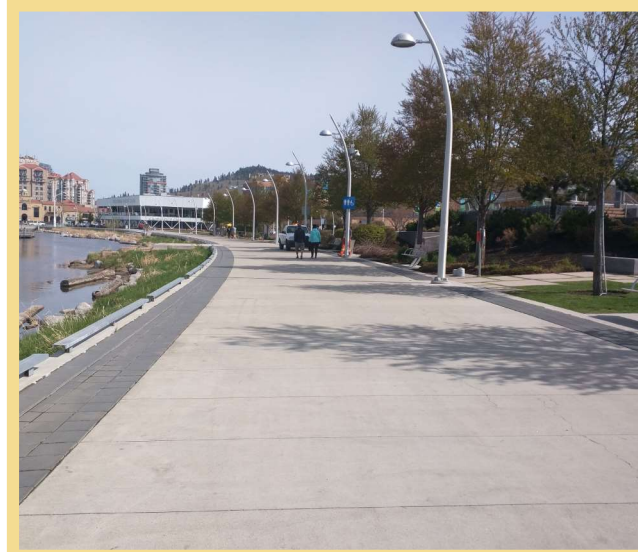
FESTIVAL SPACE – marathon start/finish, Whale Festival, Canada Day, Ukee Days, Salmon BBQ, Remembrance Day, Christmas Sail Past, concerts and performances



SITTING AND EATING PLACE



EDUCATIONAL FEATURES



Add a Sticky Note!



PLACE A STAR ON IDEAS OR IMAGES YOU LIKE, OR ADD COMMENTS!

TREES AND PLANTS

PATHS

TRANSIT ACCESS

WAYFINDING

VILLAGE GREEN is sometimes a quiet and casual place to enjoy a picnic. At other times it is the central gathering space for the entire town.

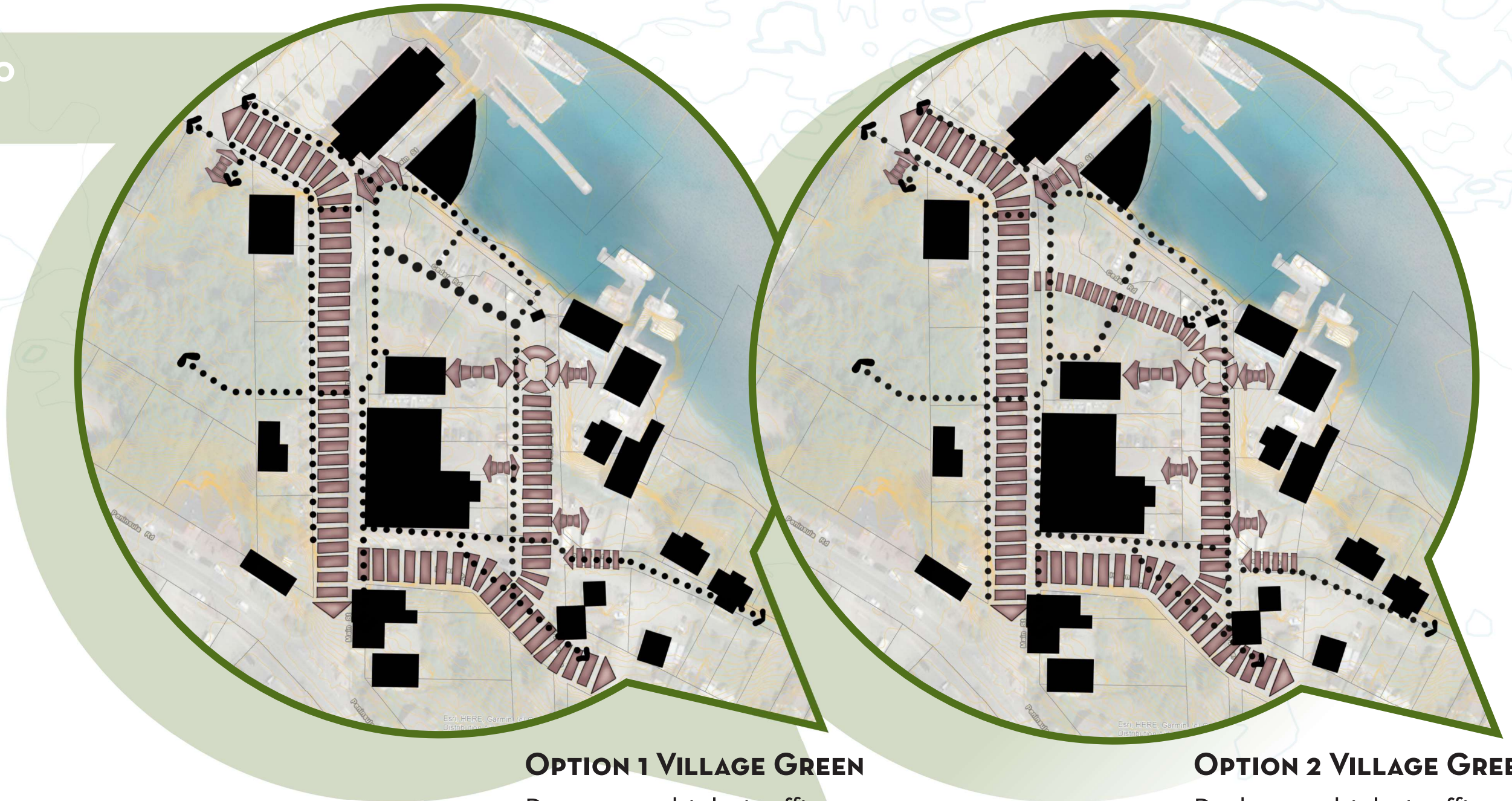


DISTRICT OF **UCLUELET**

CIRCULATION - BIG MOVES

CONNECTIONS TO SURROUNDINGS

More and better organized parking on Main Street, Fraser Lane, and Helen Road with routes for pedestrians and cyclists



OPTION 1 VILLAGE GREEN

Remove vehicle traffic through Village Green, except for service and emergency vehicles

OPTION 2 VILLAGE GREEN

Reduce vehicle traffic through Village Green to a one-way road with no parking

Add a Sticky Note!

PLACE A STAR ON THE IDEAS YOU LIKE, OR ADD COMMENTS!



DISTRICT OF **UCLUELET**

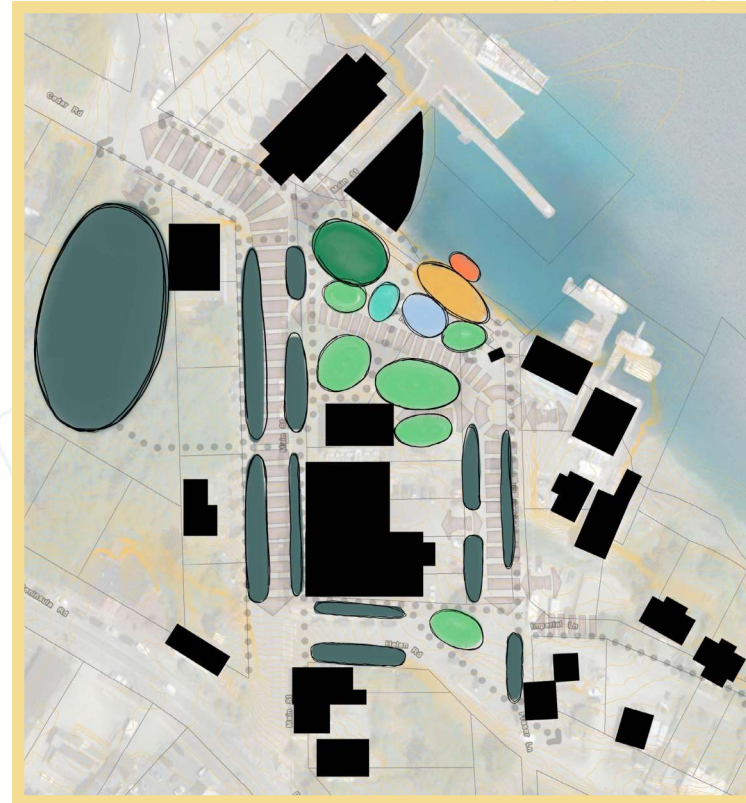
GREEN SPACE - BIG MOVES

LANDSCAPE MOVES

- Adjust grades to create a large level space in the centre
- Remove retaining wall and build terraces that step down from the green to the seawall
- Remove some maples and plant new trees around the edges of the green to frame the space better
- Provide linked accessible paths to all parts of the green, including the seawall
- Include the playground and a performance space within the green

THE FOLLOWING DIAGRAMS TO THE RIGHT SHOW POTENTIAL ARRANGEMENTS OF THE KEY FEATURES

PLACE A STAR OR STICKY NOTE ON IMAGES YOU LIKE!



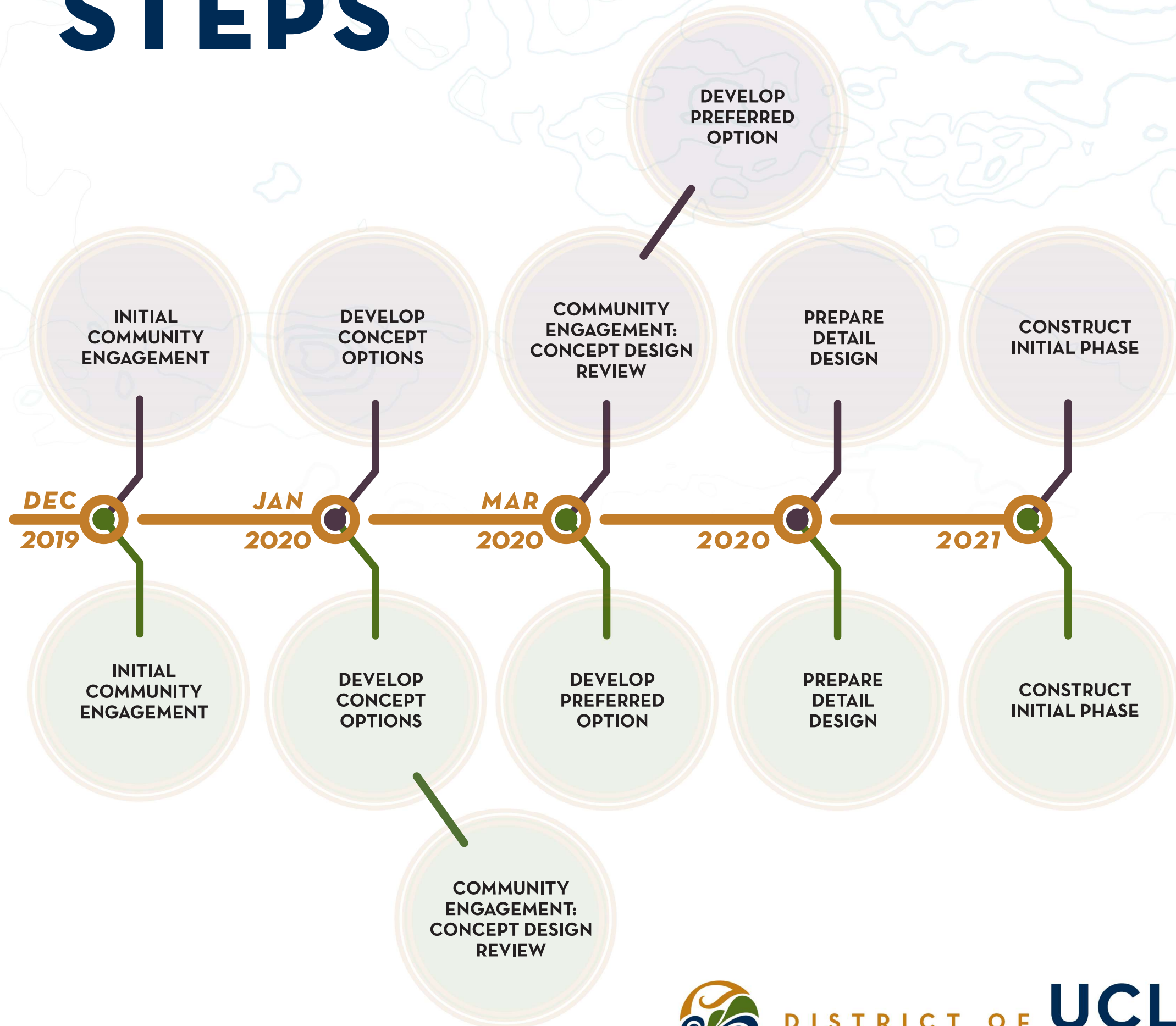
- MEMORIAL GARDENS
- LAWNS + GREEN SPACE
- PATIO / STAGE
- PARKING
- HARBOUR & SEATING DECK
- MUNICIPAL OFFICES / BUILDINGS
- WATERFRONT TERRACES
- PLAY AREA



DISTRICT OF UCLUELET

NEXT STEPS

**PENINSULA ROAD
STREETSCAPE**



VILLAGE GREEN



DISTRICT OF **UCLUELET**